

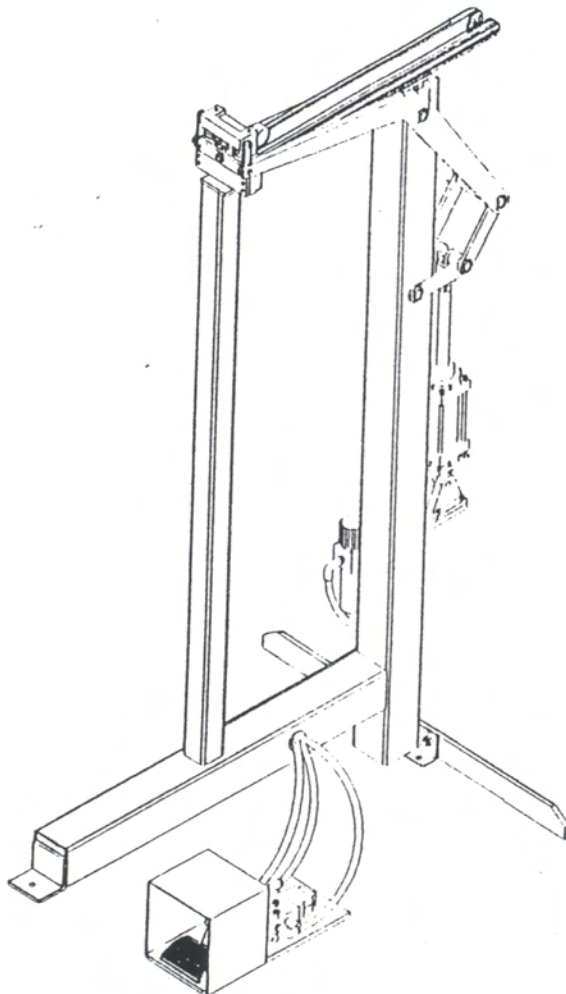
# PNEUMATIC BOTTOMER

MODEL : STP-AMIT-C58C34AB

## MANUAL

### **WARNING**

BEFORE OPERATING THIS STAPLER. ALL OPERATORS SHOULD STUDY THIS MANUAL, TO UNDERSTAND AND FOLLOW THE SAFETY WARNINGS AND INSTRUCTIONS. KEEP THESE INSTRUCTIONS WITH THE STAPLER FOR FUTURE REFERENCE. IF YOU HAVE ANY QUESTION, CONTACT YOUR DISTRIBUTOR



# TOOL SPECIFICATIONS

- MODEL OF TOOL.....
- DIMENSIONS (LENGTH X HEIGHT X WIDTH).....830MM X 600MM X 1245MM
- WEIGHT (WITHOUT FASTENERS).....23.7 KG
- AIR INLET.....1/4 " NPT
- COMPRESSED AIR:
  - MAXIMUM PERMISSIBLE OPERATING PRESSURE.....8 KG/CM<sup>2</sup>
  - RECOMMENDED OPERATING PRESSURE.....5 KG/CM<sup>2</sup> ~ 6KG/CM<sup>2</sup>
  - STAPLES SPECIFICATION.....CROWN  
LENGTH 15MM ,18MM.
- STAPLES CAPACITY.....200 PCS

THE NOISE LEVELS: (AT THE WORKPLACE ALWAYS WEAR HEARING PROTECTION EQUIPMENT.)

A - WEIGHTED SINGLE - EVENT SOUND PRESSURE LEVEL AT OPERATOR'S POSITION :  $L_{pA,1s} = 89$  dBA

A - WEIGHTED SINGLE - EVENT SOUND POWER LEVEL :  
 $L_{WA,1s} = 93$  dBA

A - WEIGHTED SINGLE - EVENT SURFACE SOUND PRESSURE LEVEL :  
 $\bar{L}_{pA,1s,1m} = 80$  dBA

# SAFETY INSTRUCTIONS

DANGER

1. READ THIS MANUAL AND UNDERSTAND ALL SAFETY INSTRUCTIONS BEFORE OPERATION THE TOOL IF YOU HAVE ANY QUESTIONS, PLEASE CON-

TACT OUR AUTHORIZED REPRESENTATIVES.

2. NEVER USE ANY TYPE OF FLAMMABLE GASES OR OXYGEN AS A POWER SOURCE FOR THE TOOL USE FILTERED, LUBRICATED, REGULATED COMPRESSED AIR ONLY.
3. NEVER USE GASOLINE OR OTHER FLAMMABLE LIQUIDS TO CLEAN THE TOOL. VAPORS IN THE TOOL WILL IGNITE BY A SPARK AND CAUSE THE TOOL TO EXPLODE.
4. DO NOT EXCEED MAXIMUM PERMISSIBLE OPERATING PRESSURE OF THE TOOL (8 KG/CM<sup>2</sup>)
5. DISCONNECT THE TOOL FROM AIR SUPPLY BEFORE CLEANING JAMS, SERVICING, ADJUSTING, AND DURING NON - OPERATION.

### WARNING

6. AT THE WORKPLACE, ALWAYS WEAR THE PROTECTIVE EQUIPMENT SUCH AS SAFETY GLASSES, HEARING PROTECTION AND HEAD PROTECTION.
7. DO NOT USE A CHECK VALVE OR ANY OTHER FITING WHICH ALLOWS AIR TO REMAIN IN THE TOOL.
8. DO NOT PLACE YOUR HAND OR ANY PART OF YOUR BODY IN THE STAPLE CLINCHING AREA, BETWEEN COVER B (016) AND MOLD (046).

## LUBRICATION AND MAINTENANCE

- DISCONNECT THE AIR SUPPLY FROM THE TOOL BEFORE LUBRICATING, OR SERVICING THE TOOL.

### NOTE

- YOUR TOOL REQUIRES LUBRICATION BEFORE YOU USE IT FOR THE FIRST

TIME.

- PUT OIL INTO OILER AND CHECK OIL LEVEL DAILY.
- CHECK THE FILTER ON A DAILY BASIS AND IF NECESSARY DRAINED.

## ASSEMBLY AIR BOTTOMER

1. FIND A SUITABLE PLACE.
2. OPEN THE PACKING AND STAND THE MACHINE UP.
3. USE 6 MM HEX. WRENCH AND 13 MM SPANNER TO ASSEMBLE THE BALANCER (049). **NOTE**: LET THE BALANCER (049) BE GOOD BALANCE ON THE LAND.
4. USE 4 MM HEX. WRENCH AND 8 MM SPANNER TO ASSEMBLE THE "THREE POINT SET" (036)
5. CONTACT THE AIR SOURCE, THEN YOU CAN USE THE BOTTOMER.

**NOTE**: CONTROL THE AIR PRESSURE BETWEEN 5 KG/CM<sup>2</sup> AND 6 KG/CM<sup>2</sup>

## ADJUSTMENT THE SPEED

1. ADJUSTERS (523) CONTROL THE DRIVER'S SPEED.  
THE UNDER ONE CONTROLS THE DRIVER'S PRESS SPEED.  
THE OTHER ONE CONTROLS THE DRIVER'S BACK SPEED.
2. FIX THE ADJUSTERS WHEN THE OPERATING SPEED YOU LIKE.

## OPERATING THE AIR BOTTOMER

1. PULL PUSHER (026) BACKWARDS UNTIL IT STOPS ON PUSHER PIVOTS (024).  
THEN ROTATE PUSHER (026) INTO POSITION.
2. INSERT 4 STICKS OF APPROPRIATE STAPLES INTO THE MAGAZINE (020)  
FROM BACK. LET THE STAPLES SLIDE FORWARD TO THE FRONT OF THE  
MAGAZINE (020).

3. PULL PUSHER (026) BACK TO UPRIGHT POSITION AND GENTLY LET THE PUSHER (026) SLIDE FORWARD AGAINST THE STAPLES. DO NOT LET THE PUSHER (026) SLIDE FORWARD TO ENGAGE STAPLES AT HIGH SPEED OR IT MAY DEFORM THE STAPLES OR DAMAGE THE MACHINE.

**NOTE**: KEEP SPRING (028) CLEARLY AND DON'T BEND THE SPRING (028)

4. PUT THE CARTON INTO POSITION.

**NOTE**: STRAIGHT THE CENTER LINE OF CARTON TO THE COVER A'S (016) CENTER LINE.

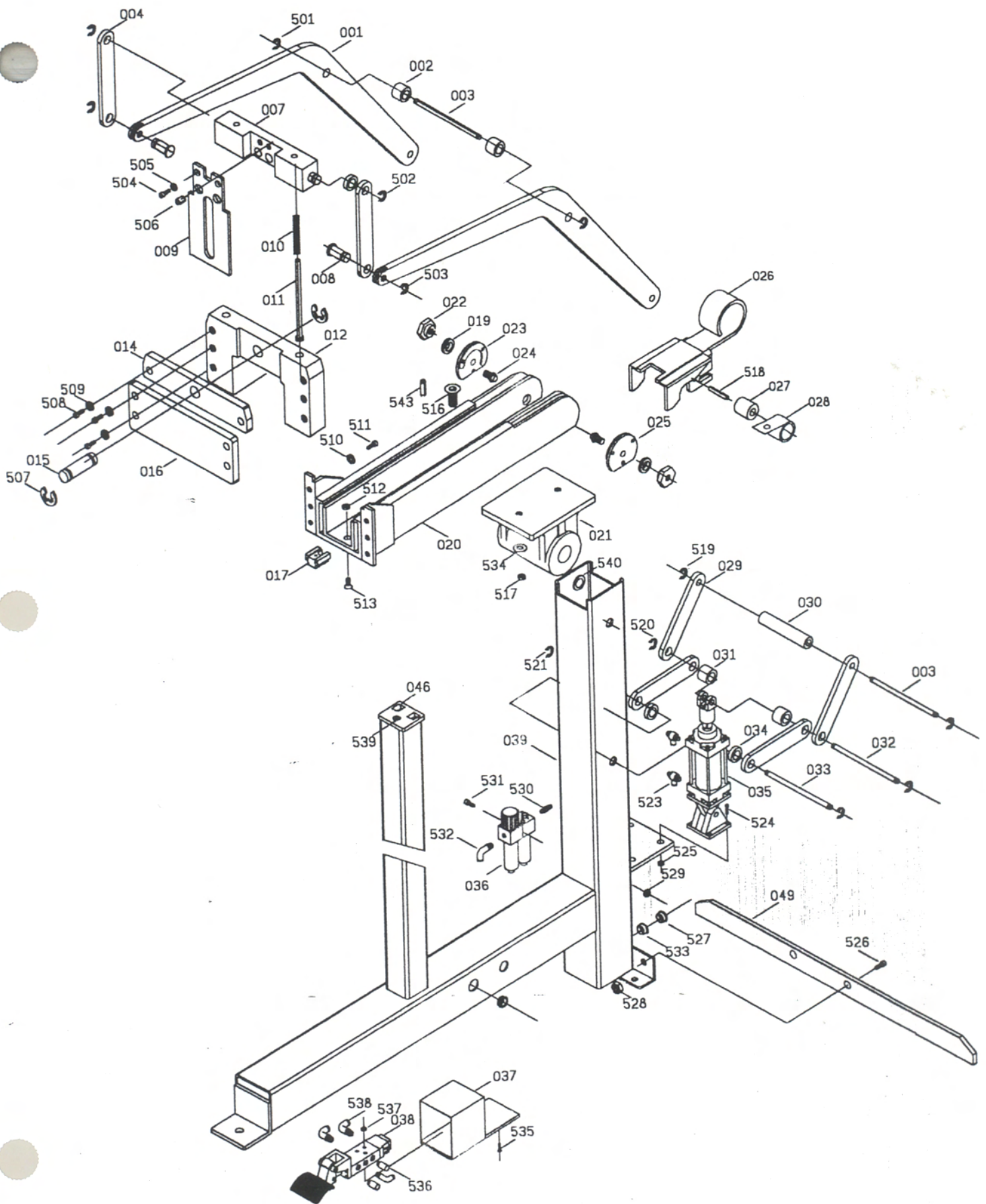
5. PRESS THE SWITCH (038) DOWN BY FOOT UNTIL IT STOPS. THEN RELEASE THE SWITCH (038).

**NOTE**: IF THERE IS NOT A CARTON IN POSITION, DO NOT PRESS THE SWITCH (038) DOWN.

## **CLEARING A JAM**

1. PULL THE PUSHER (026) BACKWARDS AND ROTATE INTO POSITION. THEN REMOVE THE REST OF THE STAPLES.
2. REMOVE COVER A (016) WITH 4 MM HEX. WRENCH.
3. CLEAR THE JAM.
4. ASSEMBLE COVER A (016).

**NOTE**: DISCONTACT THE AIR SOURCE, WHEN CLEARING A JAM.



el No. : CAB-S

M	PART NO.	DESCRIPTION	QTY	SPECIFICATION
1	A00600101	LINK 1	2	
2	A00603401	TUBE	2	
3	A00603201	SHAFT A	2	
4	A00600401	LINK 2	2	
7	A00600703	DRIVER SEAT	1	
8	A00600801	SHAFT C	2	
9	A00600904	DRIVER SEAT	1	35
9	A00600905	DRIVER SEAT	1	32
9	AC0600906	DRIVER SEAT	1	34
0	A00601002	SPRING	2	
1	A00601103@	SPRING SHAFT	2	
2	A00601202	MAGAZINE SEAT	1	35
2	A00601203	WASHER	2	32
2	A00601204	WASHER	2	34
4	A00601402	COVER B	1	35
4	A00601403	COVER B	1	32
4	A00601404	COVER B	1	34
5	A00601502	SHAFT D	1	
6	A00601602	COVER A	1	35
6	A00601603	COVER A	1	32
6	A00601604	COVER A	1	34
7	A00105601	BRACKET	1	
9	A00107001	WASHER	2	
0	CMB-S-35-P3	MAGAZINE UNIT	1	35
0	CMB-S-32-P3	MAGAZINE UNIT	1	32
0	CMB-S-34-P3	MAGAZINE UNIT	1	34
1	A00602101	BRACKET	1	
2	A00103102	NUIT	2	
3	A00103903@	RIGHT PUSHER GUIDE	1	
4	A00103203	ROD	2	
5	A00103904@	LEFT PUSHER GUIDE	1	
6	A00103707@	PUSHER SET	1	35
6	A00103706@	PUSHER SET	1	32
6	A00103708@	PUSHER SET	1	34
7	A00103501	ROLLER	1	
8	A00602801	SPRING	1	
9	A00602901	LING 3	4	
0	A00603002	TUBE	1	
1	A00700102	TUBE	2	
2	A00700202	SHAFT K	1	
3	A00603302	SHAFT F	1	
4	A00603402	TUBE	2	
5	BAI101	CYLINDER SET	1	φ 50, S=100mm
6	BAI201	THREEPOINT SET	2	
7	A00605001@	WSWICH COVER UNIT	1	
8	BAI501	SWITCH	1	
9	A00603902@	BODY SET	1	
6	A00604601	MOLD	1	35

ITEM	PART NO.	DESCRIPTION	QTY	SPECIFICATION
046	A00604602	MOLD	1	32,34
049	A00604901	BALANCER	1	
501	BAF11002	E-RING	2	φ 10
502	BAF10502	E-RING	2	φ 5
503	BAF10502	E-RING	2	φ 5
504	BAC0404102	HEX.SOC.HD.BOLT	2	M4 x 0.7-10
505	BAE01042	SPRING WASHER	2	M4
506	BAA060016	SPRING PIN	2	φ 6-16
507	BAF10602	E-RING	2	φ 6
508	BAC0405102	HEX.SOC.HD.BOLT	6	M5 x 0.8-10
509	BAE01052	SPRING WASHER	6	M5
510	BAE01052	SPRING WASHER	6	M5
511	BAC0405082	HEX.SOC.HD.BOLT	6	M5 x 0.8-8
512	BAD001041	LOCK NUT	1	M4 x 0.7
513	BAC0204202	HEX.SOC.FLAT COUNTER SUNK HD. SCREW	1	M4 x 0.7-20
516	BAC0205202	HEX.SOC.FLAT COUNTER SUNK HD. SCREW	2	M5 x 0.8-20
517	BAD01051	LOCK NUT	2	M5 x 0.8
518	BAA040016	SPRING PIN	1	φ 4-16
519	BAF11002	E-RING	2	φ 10
520	BAF11002	E-RING	2	φ 10
521	BAF11002	E-RING	2	φ 10
523	BAI401	ADJUSTER	2	φ 3/8"
524	BAC0405302	HEX.SOC.HD.BOLT	4	M5 x 0.8-30
525	BAD01051	LOCK NUT	4	M5 x 0.8
526	BAC0408162	HEX.SOC.HD.BOLT	2	M8 x 1.25-16
527	BAI601	GLOVE	2	φ 3/4" RUBBER
528	BAD01081	LOCK NUT	2	M8 x 1.25
529	BAD01051	LOCK NUT	2	M5 x 0.8
530	A00700811	AIR PLUG	1	ASIA 3/8"x5/16"
530	A00700812	AIR PLUG	1	USA 3/8"x5/16"
530	A00700813	AIR PLUG	1	EUROP 3/8"x5/16"
531	BAC0405202	HEX.SOC.HD.BOLT	2	M5x0.8-20
532	BAI701	PU PLUG	1	1/4" x 8-90°
533	BAI602	GLOVE	1	φ 3/4" PLASTIC
534	BAE03051	WASHER	2	φ 5.1x φ 12x φ 0.8T
535	BAC050011	FLAT HEAD SCREW	3	1/4"-11/2 UNC
536	BAI501	DEFLECTOR	2	1/4"
537	BAD03011	NUIT	3	1/4"NUC
538	BAI701	PU PLUG	3	1/4" x 8-90°
539	BAC0204082	HEX.SOC.FLAT COUNTER SUNK HD. SCREW	1	M4 x 0.7-0.8
540	BAE03142	WAVE WASHER	2	φ 14.5 x φ 21
541	BAI801	TUBE	2	φ 5 x φ 8x130 CM
542	BAI802	TUBE	1	φ 5 x φ 8x145CM
543	BAA040012	SPRING PIN	4	φ 4 x 12